

From Vision



to Reality

Marc Clamage
774.219.7454
emasary@comcast.net
www.emasary.com

GRAPHIC AND WEB SITE DESIGN



The Design
Partnership
OF
Cambridge
INCORPORATED

HOOD BUSINESS PARK
500 RUTHERFORD AVE
CHARLESTOWN, MA 02129
TEL 617.241.9800
FAX 617.241.3143
WWW.TDPC.COM

ARCHITECTURE
PROGRAMMING
MASTER PLANNING
INTERIOR DESIGN
PROGRAM MANAGEMENT

Front: Hingham High School, Agostini Construction Company
Inside Top: Haverhill High School, Scibbe Construction Company
Inside Middle: Skow Middle School, Castagna Construction Company
Inside Bottom: Martha's Vineyard Regional High School, TLF Construction

From Vision



Why Hire a **Program/Construction Manager**?

Business-driven public owners expect their projects to be focused on improved performance and increased community satisfaction, in addition to traditional values of cost effectiveness and serviceability. Experienced owners recognize that the best method for controlling a construction project is to integrate the efforts of the project team and manage the development process from the beginning.

Program/Construction Managers help owners make better decisions about their projects than would otherwise be possible. They save time and money by avoiding redesign and minimizing changes during construction.

TDPC Program Management services include:

- Project Management
- Project Planning and Scheduling
- Facility Assessments
- Educational Programming
- Cost Control
- Public Outreach Campaigns
- Regulatory Approvals
- SBAB Funding Assistance
- Peer Reviews
- Performance Monitoring
- Occupancy Coordination
- Project Accounting



Postcard Design

Client: The Design Partnership of Cambridge, Charlestown, MA

GRAPHIC AND WEB SITE DESIGN

From Vision to Reality

CostControl



Postcard Design

Client: The Design Partnership of Cambridge, Charlestown, MA

GRAPHIC AND WEB SITE DESIGN



THE REFLEX LIGHTING GROUP INC.

COOPER Lighting

INVUE™

www.invuelighting.com



www.lightarch.com



Gateshead Millennium Bridge, Gatehead, UK

A European Approach to Lighting Design

- Is there such a thing as a European approach to lighting design?
- Is it different from North America?
- Is there anything to be learned from the Old World?

JONATHAN SPEIRS is a lighting Architect with over 20 years experience as an independent lighting consultant and designer. He is a Principal of Speirs and Major Associates (SaMA) based in the UK with studios in Edinburgh and London, and has worked on projects in 36 countries. Projects range from the Millennium Dome and Bluewater Retail Park in the UK to the Jumeirah Beach Resort and the Burj Al Arab Tower, both in Dubai. SaMA is currently working on projects in London, Copenhagen, Dresden, Edinburgh, and Dubai. Mr. Speirs has received numerous awards, including the Lighting Dimensions International—Architectural Lighting Designer of the Year Award.

Creativity, attention to detail, and delivering innovative solutions are motivating criteria for SaMA. Mr. Speirs will discuss means of demonstrating lighting concepts and ideas through clear and engaging presentations, how they reinforce the architectural environment, and how they add value to the project. Examples of presentation techniques and methods will be graphically demonstrated to illustrate different approaches as well as the concepts themselves.

Projects presented will include the Burj Al Arab Tower, the Transaction lightart project, Dubai, the Millennium Dome, St. Paul's Cathedral, the Bridge of Aspiration and Swiss Re Tower, London, the Gateshead Millennium Bridge, Copenhagen Opera House, and the Magna Science Adventure Centre, Rotherham.

Postcard

Client: Reflex Lighting Group, Boston, MA

GRAPHIC AND WEB SITE DESIGN



ELAINE HARMON Daughter & Survivor
ANGELA: a painting of my mother 1996
Mixed media/watercolor 17½x14½

In 1995, I was diagnosed with stage-one breast cancer.

After chemotherapy and many surgeries, I have been blessed with remission.

Fighting cancer is a struggle, a long, hard battle forcing one to face death. Even though I have been in remission for six years, the cancer is something that must always be respected, as it may resurface at any time.

My mother died in 1998.

She fought for a long time. Her will to live was very strong, but her body was weak and frail.

Her spirit will always be alive, just as the thousands of women who have died of breast cancer will be remembered.

In loving memory of Angelina D'Agostino



NATASHA COHEN Supporter
IN HER DREAM 2000
Etching, lithography, collage 9x12

Andrea is a fighter, a survivor; she has beaten all the odds.

She dreams a lot.

She is not alone.

She is loved by many.

HENNIE STARGARDTER Supporter
P & J 2000
Oil on canvas 28x34

To life...with all its big and small joys.



she is loved by many

Spread from "Art for the Cure" Catalog

Client: Susan G. Komen Foundation, Dallas, TX

GRAPHIC AND WEB SITE DESIGN

Sunny Yellow,
Periwinkle Blue,
Girl Pink,
Island Green...
these delightful
pastels can be
mixed or
matched—they
coordinate
in any
combination.



10003-12-18



10034-2-18



10004-15-18



10348-9-18



10034-14-18



10348-10-18



10348-12-18



10348-13-18



10348-11-18



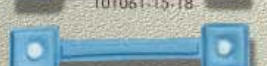
10348-15-18



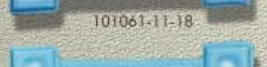
101061-12-18



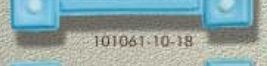
101061-15-18



101061-11-18



101061-10-18



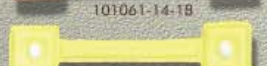
101061-13-18



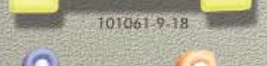
101061-14-18



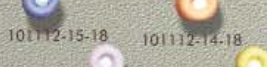
101061-9-18



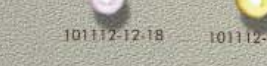
101061-12-18



101061-14-18



101061-9-18



101061-12-18



101061-14-18



101061-9-18



10158-12-18



10158-11-18



10158-10-18



10158-13-18



10158-14-18



10158-9-18



10158-12-18



10158-11-18



10158-10-18



10158-13-18



10158-14-18



10465-10-18



10444-15-18



10356-12-18



101112-10-18



101112-13-18



101112-11-18



101112-15-18



101112-14-18



101112-9-18



Anne at Home™
150 Dupont Drive • Providence, RI 02907
Phone: (888) 371-2600 (401) 464-8677
Fax: (401) 464-8674
Email: anneathome@compuserve.com

Living Colors

New from Anne
at Home, each
piece is hand
painted with
layers of color
taken from
Nature's own
palette. These
are simple
treasures—
unique and
expressive.



10437-18



10331-18



10438-18



10320-18



10325-18



10326-18



10434-18



10435-18



10333-18



10322-18



10895-18



10301-18



10439-18



10328-18



10330-18



10431-18



10433-18



10321-18



10323-18



102223-17-18



102223-16-18



10034-18



Spread from Manufacturer's Catalog

Client: Anne at Home, Providence, RI

GRAPHIC AND WEB SITE DESIGN

DESIGN
PARTNERSHIP

DESIGN **PARTNERSHIP**
OF **CAMBRIDGE** INC.

The Design
Partnership
of Cambridge

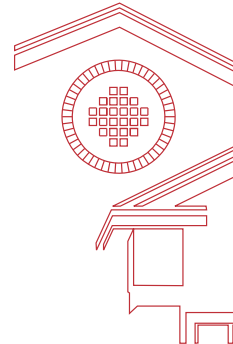


DESIGN
PARTNERSHIP
OF CAMBRIDGE INC

hood business park
500 rutherford ave
boston massachusetts 02129
tel 617 241 9800
fax 617 241 5148



THE **DESIGN**
PARTNERSHIP
OF CAMBRIDGE INC.



HOOD BUSINESS PARK
500 RUTHERFORD AVE
CHARLESTOWN
MASSACHUSETTS 02129

(T) 617.241.9800
(F) 617.241.5143
(W) WWW.TDPC.COM
(E) INFO@TDPC.COM

The **DESIGN**Partnership of Cambridge Inc

Logo Identity Design

Client: The Design Partnership of Cambridge, Boston, MA

GRAPHIC AND WEB SITE DESIGN



**Challenge
Coin Company, LLC**
challengecoin.com



FRONT

Imitation Enamel (No Grinding)
Raised Text & Features



BACK

Imitation Enamel (No Grinding)
Raised Text & Features

Drawing name: Bulldog Coin
Material: Die struck brass alloy
Size: 51mm x 3 - 3.5mm thick

Challenge Coin

Client: Ira Green, Inc., Providence, RI

GRAPHIC AND WEB SITE DESIGN



**Challenge
Coin Company, LLC**
challengecoin.com



FRONT

Sculpted front



BACK

Imitation Enamel (No Grinding)
Raised Text & Features

Drawing name: 97th ASir Mobility Coin
Material: Die cut zinc alloy
Size: 76 mm h x 57 mm w x 3 - 3.5mm thick

Challenge Coin

Client: Ira Green, Inc., Providence, RI

GRAPHIC AND WEB SITE DESIGN



**Challenge
Coin Company, LLC**
challengecoin.com



FRONT

Imitation Enamel (No Grinding)

Raised Text & Features

- 3D Sculpting: emblems and flag poles

Drawing name: Ambassador To Israel Coin

Material: Die struck brass alloy

Size: 50mm x 3 - 3.5mm thick



BACK

Imitation Enamel (No Grinding)

Raised Text & Features

Challenge Coin

Client: Ira Green, Inc., Providence, RI

GRAPHIC AND WEB SITE DESIGN

METAL GARDEN HOSE



- All four sizes are in the ACE RSC's.
- Available in: 25 ft, 50 ft, 75 ft and 100 ft.

SIZE	ACE ITEM #	CASE PK	MSRP	WHSE COST	GPM %	INSTANT SAVINGS AMT
25'	6584973	8	\$24.99	\$16.51	34%	\$ 5 OFF
50'	6473375	6	\$39.99	\$26.41	34%	\$ 7 OFF
75'	6584940	6	\$59.99	\$39.06	35%	\$12 OFF
100'	6664981	4	\$79.99	\$52.26	35%	\$15 OFF

Promote the savings to your customer, instant Coupon savings of \$5, \$7, \$12 and \$15 OFF depending upon the size.

IN-STORE INSTANT SAVINGS

for the entire MONTH OF MAY!!

STAINLESS STEEL HOSE

Tough Outer Shell:

- Kink and Puncture Proof
- Rust and Corrosion Resistant

Ease of use:

- Light weight, Easy to Coil
- Ultra Flexible
- Kink Proof
- Cool to the touch

Durable and Versatile:

- Patented Flex Coupler, won't snap off at the spigot
- Works With Both Low and High Water Pressure



HARVEST HD DIRECT

Vendor # 45610

Email: products@harvestdirect.com
800.443.6678, press #2 for Sales

Flyer Design

Client: Harvest Direct, LLC, Attleboro, MA

GRAPHIC AND WEB SITE DESIGN



How do they do it?

Do what New York firms

How does the New York design and architecture community produce so many award winning, internationally renowned and respected projects?

The answer is a lot of talent, a wonderful spirit of community, and a little help from CFA, Inc. For over 19 years, CFA has supported the New York design and architectural community with per-project consultants, full-time staff, award-winning CAD and multimedia training, sales and support.

Stop by or call to speak with a member of our courteous and knowledgeable staff.

have been doing for years!

CFA, Inc.
236 Fifth Avenue
Ninth Floor
New York, NY 10001
212.532.4360

www.cons4arch.com
www.CADstoreOnLine.com

autodesk®
premier support center
authorized systems center
solutions training

Marketing Postcard

Client: Consulting for Architects, New York, NY

GRAPHIC AND WEB SITE DESIGN

(the Question) EFFECTIVE STAFFING

Do you ever get the feeling that your competitors are recruiting and hiring more talented architects than you are? That your *help wanted* ads are yielding piles of off-target résumés? Are you spending more time on non-billable staffing activities than on billable activities? Do you ask yourself if you want to gamble again on hiring another "friend of a friend"? Or whether your staff is equipped to negotiate a fair market salary in today's volatile economy? Are you risking IRS and State penalties by not deducting payroll taxes from freelancers' wages? Do you ever find the need to meet a deadline or complete a short-term project with additional staffing? Do project managers ever hit you with last-minute demands for more staff? Do you ever wonder whether the ideal candidate is out there *somewhere*, and why it seems so difficult to put your finger on that particular person?

(the Answer) CONSULTING FOR ARCHITECTS, INC.

Our company provides the key services to tackle your staffing challenges and save your company significant time and money. Take advantage of our expertise so you can spend your time prospecting for new clients instead of dealing with personnel headaches. Call New York, Boston and Chicago's leading placement and recruiting firm to the design profession. Find out why your industry colleagues rely on our unsurpassed record, calling us again and again when they require unique staffing solutions for important projects. We address these and many other issues on a daily basis. We only represent the top candidates among professionals in all design fields. Our interviewing and screening process produces proven, winning results. For more information regarding our competitive fee structure and quick response time please call.




Consulting for Architects, Inc.
"Creating Staffing and Software Solutions."
 The Architects Building
 52 Broad Street
 Boston, MA 02601
 617.261.0090
www.cons4arch.com
 a BSA staffing service




CONSULTING FOR ARCHITECTS INC.

www.cons4arch.com

BSA-Related Staffing Service



The Boston Society
of Architects

PER PROJECT ➤ CONVERSION ➤ PERMANENT

Placement Referral Services for Architecture and Building Design Professionals:

- Architects ➤ CAD and Multimedia
- Interiors ➤ Facilities

Since 1984, Consulting For Architects, Inc. has partnered with the architecture and building design community to provide an invaluable service to firms and self-employed industry professionals in need of consulting relationships on a per-project or permanent basis.

CFA learns as much as possible about every candidate and client firm we work with. In particular, all candidates complete

- In-depth, and in-person, interview at CFA's office
- A thorough portfolio and résumé review and consultation
- All CAD skills are graded, evaluated, and upgraded
- All references are checked
- No résumés are submitted without candidate approval

Because the consultants that CFA refers are self-employed, independent contractors, firms that use CFA are not liable for:

- Workers Compensation - Health Benefits
- Paid Holidays - Sick Days
- Unemployment Insurance - Accounting Overhead
- Payroll Taxes - Overtime Compensation
- Other expenses normally associated with the typical employer/employee relationship

Donna Mullen
Associate/Senior Account Executive, CFA / Boston
dmullen@cons4arch.com

David McFadden
Founder/CEO, Consulting For Architects, Inc.
dmcfadden@cons4arch.com

NEW YORK ➤ BOSTON ➤ CHICAGO

236 Fifth Avenue New York, NY 10001 Tel: 212 532-4360 Fax: 212 696-9128	52 Broad Street Boston, MA 02109 Tel: 617 261-0090 Fax: 617 261-0098	120 S. State Street Chicago, IL 60603 Tel: 312 345-1700 Fax: 312 345-1415
--	---	--

Chapterletter Inserts

Client: Consulting for Architects, New York, NY

GRAPHIC AND WEB SITE DESIGN

DISTRICT 25

NEW ENGLAND BRIDGE CONFERENCE

NEW USERS
CALENDAR

♣ TOURNAMENT RESULTS

MASTERPOINT RACES

DISTRICT DIRECTOR'S
REPORT

DISTRICT OFFICERS

DISTRICT 25 NEWS

LINKS TO OTHER
SITES



file:///F:/Clients/District25/results.htm

Welcome to the District 25 Web Site

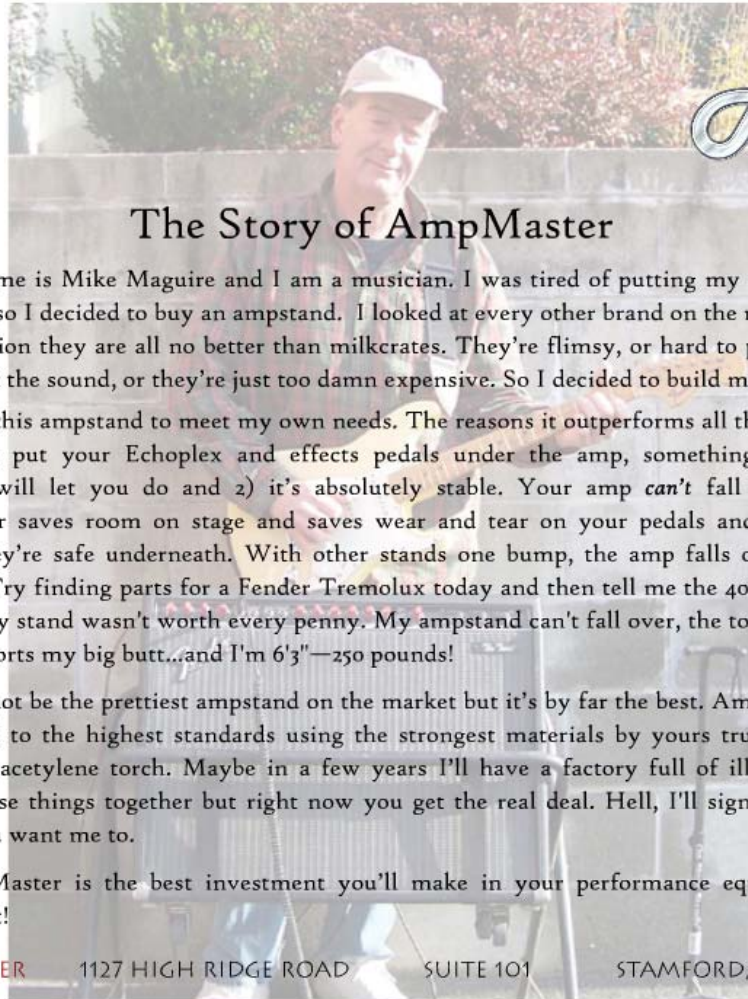
- ♦ The New England Bridge Conference is District 25 of the American Contract Bridge League (ACBL). Our eight units cover Connecticut, Maine, Massachusetts (3 units), New Hampshire, Rhode Island, and Vermont.
- ♣ If you are new to this site, click on [New Users](#) for helpful hints on how to use and navigate the various sections.
- ♥ Next Regional Tournament - New England Knockout Team Regional
Cromwell, CT., Feb. 11-16, 2004. [Click here](#) for details.
- ♦ Last Regional Tournament
Newton, MA, Jan. 9-11, 2004. [Click here](#) to see the results by event;
♣ [click here](#) to see who won points. To see the four session Individual Overall Prize Winners, [click here](#). (Calculations of the best Individual performance in each New England unit. for having the highest 4 session performance in the Individual in each strat will be available at a later date.)
- ♣ Other Upcoming Tournaments of Note
♦ (For dates and details on District 25 Sectionals, click on [Calendar](#).)
♥ [Grand National Teams](#), Worcester, MA. (change from the Bulletin) Jan. 31 - Feb. 1, 2004
♣ [New England Knockout Team Regional](#), Cromwell, CT. Feb. 11-16, 2004.
♦ [Spring Nationals](#), Reno, NV. Mar. 18-28, 2004
♥ [Ethel Keohane Senior Regional](#), North Falmouth, MA. April 21-25, 2004.
♣ [New England Summer Regional](#), Sturbridge, MA. June 23-27, 2004.
♦ [New England Fall Regional](#), Springfield, MA. September 1-6, 2004
- ♣ District 25 Bylaws
♥ To see a copy of the District 25 Bylaws, [click here](#)
- ♣ District Director's December Report
♦ To see a copy of the District Director's December Report, [click here](#).

Web Site Design

Designed to provide easy maintenance by volunteer webmasters

Client: New England Bridge Conference District 25, Stamford, CT

GRAPHIC AND WEB SITE DESIGN



Amp Master

The Story of AmpMaster

Hi! My name is Mike Maguire and I am a musician. I was tired of putting my amp up on milkcrates so I decided to buy an ampstand. I looked at every other brand on the market and in my opinion they are all no better than milkcrates. They're flimsy, or hard to pack up, or they distort the sound, or they're just too damn expensive. So I decided to build my own.

I designed this ampstand to meet my own needs. The reasons it outperforms all the others is 1) you can put your Echoplex and effects pedals under the amp, something no other ampstand will let you do and 2) it's absolutely stable. Your amp *can't* fall over. The AmpMaster saves room on stage and saves wear and tear on your pedals and Echoplex because they're safe underneath. With other stands one bump, the amp falls off and it's damaged. Try finding parts for a Fender Tremolux today and then tell me the 40 bucks you spent on my stand wasn't worth every penny. My ampstand can't fall over, the tone is great, and it supports my big butt...and I'm 6'3"—250 pounds!

This may not be the prettiest ampstand on the market but it's by far the best. AmpMaster is constructed to the highest standards using the strongest materials by yours truly and his trusty oxy-acetylene torch. Maybe in a few years I'll have a factory full of illegal aliens putting these things together but right now you get the real deal. Hell, I'll sign the damn thing if you want me to.

The AmpMaster is the best investment you'll make in your performance equipment. I guarantee it!



AMPMASTER 1127 HIGH RIDGE ROAD SUITE 101 STAMFORD, CT 06905

Web Site Design

Client: Amp Master, Stamford, CT

GRAPHIC AND WEB SITE DESIGN

Paul North Architects, P.C.

1007 East Street Mansfield, MA 02048 508 339 5161

[home](#)

firm

residential

commercial

project mgt

[contact us](#)

Innovative design.

Green technology.

Rooted in the New England tradition.



Web Site Design

Client: Paul North Architects, PC, Mansfield, MA

GRAPHIC AND WEB SITE DESIGN

Paul North Architects, P.C.

1007 East Street Mansfield, MA 02048 508 339 5161

[home](#)

[firm](#)

[residential](#)

[commercial](#)

[project mgt](#)

[contact us](#)

MBTA Red Line, North Quincy Station Quincy, MA

While with Architects & Associated Designers, Mr. North provided feasibility studies, design and construction documents for accessibility upgrades on this 18.8 million-dollar renovation of two head houses and a train and bus platform. Construction was completed in 1994.



Web Site Design

Client: Paul North Architects, PC, Mansfield, MA

GRAPHIC AND WEB SITE DESIGN



[HOME](#) [SERVICES](#) [PEOPLE](#) [PROJECTS](#) [LINKS](#) [CONTACT US](#)

Industrial Facilities Design, Inc. (IFDI) provides companies with consulting and design services which directly meet their needs. Because of our innovative strategies and goal-setting techniques, we have a strong record of client satisfaction. IFDI provides specialty engineering and design to industries requiring clean or isolated processing areas. We specialize in the pharmaceutical, biotechnology, medical device and advanced technology industries.

Our services include:

- Program Management
- Feasibility Studies
- Conceptual Process Design
- Conceptual Facility Design
- Architecture / Engineering
- Facility and Process Validation

IFDI is always interested in meeting with new customers regarding the services we can provide. Please contact us to set a meeting date and time where we can present our capabilities to you in more detail



Web Site Design

Client: Industrial Facilities Design, Inc., Hopkinton, MA

GRAPHIC AND WEB SITE DESIGN

Rockingham Farm
Equestrian Center
SERVICES

[HOME](#)

FACILITIES

SERVICES

BARN RULES

AMENITIES

CONTACT
US

Rockingham Farm is everything a professional barn should be. We offer a variety of full board options. All horses are fed grain and quality fescue/orchard grass mixed hay twice daily. We also help coordinate vet and farrier appointments if desired.

Feeding

Horses are fed twice a day. We provide Southern States brand feeds, tailored to your horse's needs, and high-quality orchard grass/fescue hay.

Healthcare

We monitor the horses daily for injuries or illnesses. Additional charges may apply to administer special medications, wraps legs etc. if required. We will consult with our veterinarian (or yours), as needed.

Trailer Storage

No additional charge for truck and trailer storage.

Supplements

Owners can provide supplements that need to be given to your horse and Rockingham Farm staff will add to their feed as directed at no added charge. Or if the owner prefers, Rockingham Farm will purchase the supplement and add to their account for added



Web Site Design

Client: Rockingham Farms Equestrian Center, Reidsville, NC

GRAPHIC AND WEB SITE DESIGN

HOME

Noah D. Gordon is an independent craftsman with more than 20 years' experience. He specializes in turning and carving. While handwork is a special joy, Noah employs the full range of woodshop machinery, including the single-spindle carving machine. Expect your work to be completed with honesty and integrity. He is versed in all forms of architectural woodworking and will quote projects both large and small. Please click the links below to see sample pieces or call or email Noah to discuss your project.

- TURNING
- CARVING
- ARCHITECTURAL MILLWORK
- FURNITURE
- DESIGN SERVICES
- TESTIMONIALS

NOAH D GORDON

FINE WOOD TURNING AND CARVING

781 681 9200 noah@noahdgordon.com



Web Site Design

Client: Noah D. Gordon, Mansfield, MA

GRAPHIC AND WEB SITE DESIGN